



For Child Safeguarding: The DLP is Mr Brennan and the DDLP is Mr Bolton

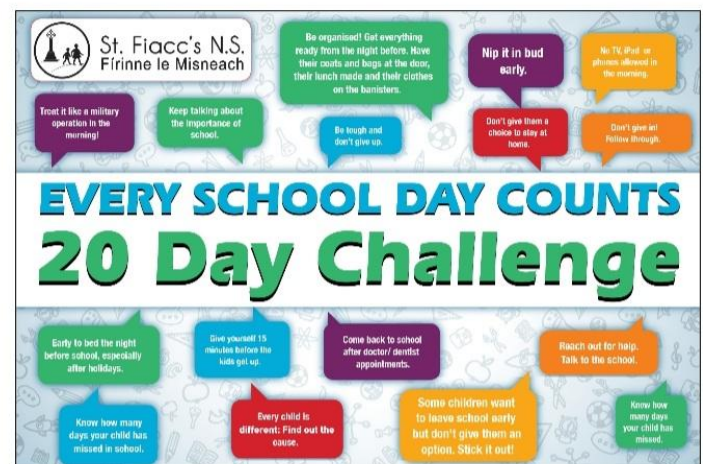
## November 2022

### Dates for your Diary

Nov 14th - 18th: Science Week

### ATTENDANCE CAMPAIGN - OUR 20 DAY CHALLENGE

There are 20 school days from November 7th to December 2nd. We are promoting good attendance for these 20 days, encouraging pupils to come to school every day for the 20 days. Unless a child is sick, we expect to see them in school. This drive is part of our DEIS plan to promote attendance. This campaign began with an Art competition (see our winners below). If you would like additional advice/support in getting your child to school please contact our attendance coordinator [missgiblin@stfiaccs.com](mailto:missgiblin@stfiaccs.com) or our HSCL [misspayne@stfiaccs.com](mailto:misspayne@stfiaccs.com) 0899487646. Our rate of attendance last November was 86.4%.



### Attendance

Attendance Rate September: 90.2% (a 3.2% improvement).

Attendance Rate October: 89.1% (a 1.5% improvement).



### **HSCL Coffee morning at St Fiacc's**



### **Family Contribution Reminder**

To allow us to continue to ensure that your children enjoy the best of facilities we request a small voluntary contribution from each family. So we are asking every family to contribute €5 on the first Wednesday of every month beginning November 9th. This payment can also be made through Aladdin Connect.

### **Shoebox Appeal**

Once again, St. Fiaccs NS took part in the Team Hope Christmas Shoe Box Appeal. Each child received a leaflet which includes a list of the acceptable items. Shoe boxes plus €4 were returned to the school before mid term break. This has been a very successful project in our school over the last number of years. We thank you for taking part and encourage any outstanding boxes to be returned on Monday.

### **School Calendar**

We are presently compiling our photos and ads for our School Calendar. It will cost 10 euro and will be payable through our Aladdin Connect app or alternatively through the office. Parents are advised to pay in advance through Aladdin Connect as we ran out of copies last year.

### **Folens Christmas Annual**

We will be issuing order forms for Folens Christmas annuals shortly. Simply complete the order form your child will bring home and return to the class teacher, if interested.

### **Hallowe'en**

Thank you to all parents who contributed to our Hallowe'en fundraiser. We managed to raise just over 500 euro thanks to your generous donations.

### **Religious Education**

At assembly we have been celebrating October, the month of the Rosary. November is a time when we remember our deceased relatives and friends.